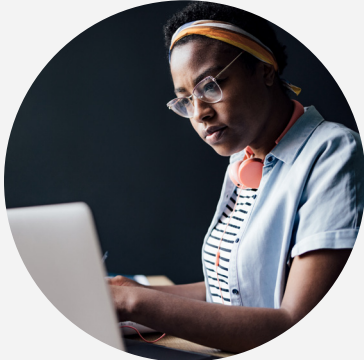


# An integrated solution for CDM

Real-time visibility and simpler CDM integration with ServiceNow and Tanium integrated workflows.



## Customer results

One federal civilian agency utilized ServiceNow with the Tanium Asset integration to:

- Meet 92% of all CDM HWAM, SWAM, CSM and VULN requirements
- Eliminate custom scripting to get data from their tools into CDM dashboards, saving significant time and reducing the chance of errors
- Save millions of dollars through tool consolidation, and reduced infrastructure with both Tanium and ServiceNow available in the cloud and FedRAMP enabled

A complete, accurate and up-to-date view of your hardware, software and virtual asset inventory in ServiceNow CMDB, with one-click integration into the CDM dashboard.

## Do you trust the data in your CDM dashboard?

Federal organizations are all facing a challenge with having certainty about their risk posture: visibility. Countless frameworks, memos and BODs have been issued on the topic of visibility, and yet, many federal agencies still don't have it.

With most configuration management databases (CMDB) pulling together huge amounts of data from many sources, the idea of accuracy can be lost in the shuffle. Your CMDB should be the single source of truth to power decisions across your IT organization. And in turn, your Continuous Diagnostics and Mitigation (CDM) dashboard ingests that data to help with key insights on your attack surface. But if you can't trust the data going in, can you trust the data coming out?

With the Tanium Asset Integration for ServiceNow, organizations can have the real-time data they need from Tanium, viewable in ServiceNow CMDB, and push that data to the CDM dashboard automatically, without the need for custom scripts, or manually reconciling data sets.

## ServiceNow customers with the Tanium Asset integration can:

- Satisfy Asset Management for CDM
- Reduce or eliminate custom scripts to push CMDB data to the CDM dashboard
- Aggregate real-time, live asset data with the most recent data from offline assets
- Easily define attribute mappings and schedules for HWAM/SWAM data to be synced from Tanium into ServiceNow

# Reduce manual tasks with complete and real-time Hardware Asset Management (HWAM) and Software Asset Management (SWAM) data and simple integrations into the CDM dashboard with Tanium and ServiceNow.

## Tanium as the source of real-time data into ServiceNow CMDB

Tanium XEM (Converged Endpoint Management) provides instantaneous endpoint visibility and control on over 5 million endpoints across the federal government.

### Tanium benefits include:

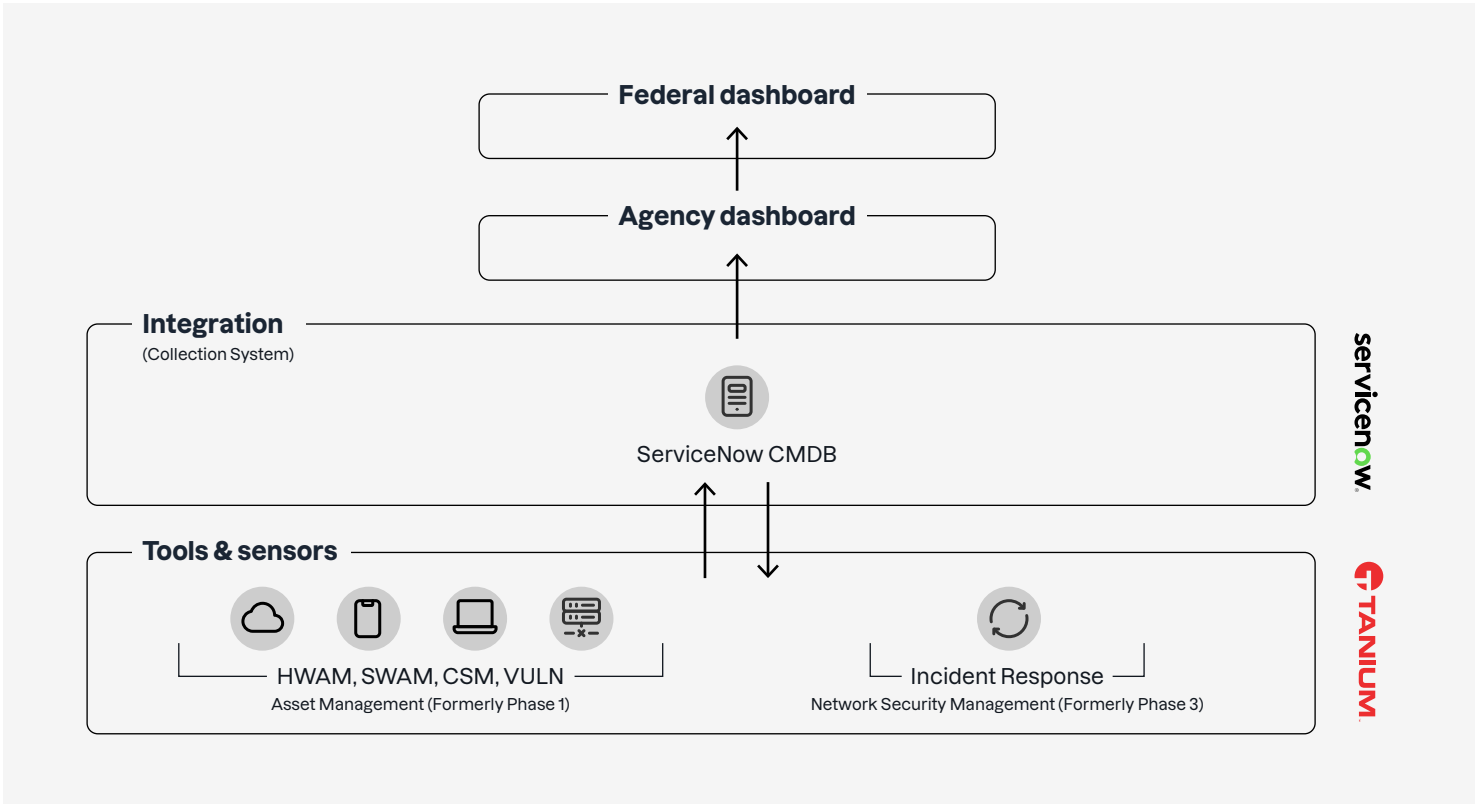
- Real-time visibility and control over all of your HWAM and SWAM data, regardless of scale or IT complexity
- Quick installation and reduction of infrastructure with a cloud-enabled FedRAMP In Process solution using a single agent
- Approved by DHS for inclusion in the CDM DEFEND Approved Products List (APL)
- Enable powerful decision making and risk analysis in CDM with real-time, accurate data going in, reducing vulnerabilities from threats

## ServiceNow as an integration layer for CDM

ServiceNow allows federal agencies to combine multiple tools used to manage their CMDB data and integrate with the CDM Asset Management layer.

### ServiceNow benefits include:

- Fully FedRAMP Authorized cloud platform
- Purpose-built automation with efficient AI-enabled, pre-built workflow solutions
- Low-code platform allowing the enterprise to adapt quickly
- Intuitive UI to empower people and reduce friction for customers





## ServiceNow & Tanium: Unsurpassed security for federal agencies

By implementing CDM capabilities, your federal agency or department can have better situational awareness across your network, making it easier to address vulnerabilities as they arise. But without full and accurate visibility into all your assets, you can't correctly estimate your attack surface.

The Tanium Asset integration for ServiceNow enables your team to have asset data pushed to ServiceNow, and then integrated with the CDM dashboard at an unparalleled level of accuracy and speed, and ensures that any workflow created in ServiceNow is based on information that is real time at any scale, no matter if the asset is physical, virtual, cloud-based, or IoT.

**Leverage your CDM dashboard like never before with Tanium and ServiceNow.**

### TANIUM & SERVICENOW

Find out how Tanium and ServiceNow can automate operations, security and user experience.

[Learn more](#)



Tanium is the platform that public sector organizations trust to protect people; defend data; secure systems; and see and control every endpoint, team, and workflow everywhere. That's the power of certainty.

Visit us at [www.tanium.com](http://www.tanium.com) and follow us on [LinkedIn](#) and [Twitter](#).



ServiceNow provides a cloud-based platform for automating IT management workflows, including IT service, operations, and business management. It eliminates silos and streamlines routine tasks, with solutions for employee and customer experiences, low-code and hyper automation, and more—all on a single platform.