



CAPGEMINI – POWERED BY TANIUM

# CMDB POPULATION & SUPPORT

Effortlessly agile, utterly efficient, and completely secure!

Capgemini 

**TANIUM.**

Modern businesses don't ask much of their IT landscapes; just that they be effortlessly agile, utterly efficient, and completely secure!

But whilst there are a number of ways to deliver this, you're doomed to fail before you even start if you don't have access to some absolutely foundational information: **what's actually on your network**. Only once you're completely confident that you have end-to-end visibility can you design and deploy a CMDB solution that delivers:

CYBER SECURITY	ASSET OPTIMISATION & OPERATIONAL EFFICIENCY	BUSINESS INTELLIGENCE
Every gap in coverage represents an opportunity for a malicious actor – comprehensive visibility into even the darkest corners of your IT Landscape ensures your security is built on the strongest of foundations.	When every dollar counts, balancing resilience with agility can be a full-time job. Insight into – and control over – every asset and resource ensures you're investing in everything you need to, and nothing you don't.	When it comes to making business-critical decisions, the only thing worse than no data is unreliable data! Leveraging Tanium's visibility, Capgemini's CMDB service delivers benefits to every part of your organisation.

# THE POWER OF CERTAINTY

## OPTIMISE YOUR CMDB WITH COMPLETE, ACCURATE AND REAL-TIME DATA YOU CAN TRUST:

**Bespoke Design:** Build and implement a CMDB solution that is designed around both your IT and wider business needs and goals.

**Visibility:** Categorise your entire environment in minutes to confidently reclaim software and build service-dependency maps.

**Control:** Discover and inventory your entire estate with a single lightweight Tanium agent in seconds.

**Trust:** Confidently make IT decisions that impact multiple teams with a single, accurate and up-to-date dataset.

**Simplicity:** Building your CMDB is just the start – Capgemini's approach focuses on a solution that continues to bring enormous advantages without requiring constant attention and maintenance.

93%

reduction in weekly scan time

35%

new endpoints discovered

20%

increase in discovery of unmanaged assets

Source: Tanium

# A WELL-IMPLEMENTED CMDB DRAMATICALLY SIMPLIFIES OPERATIONS ACROSS YOUR ORGANISATION

Performance Monitoring, Asset Optimisation, Vulnerability & Configuration Management, Incident Response, Patch Management, Business Agility, Data Protection, Regulatory Compliance, and more!

Working with Capgemini, you'll end up with a CMDB that you can trust to handle anything thrown at it:



## DESIGN

**Without a plan in place, modern IT landscapes generate unmanageable quantities of data.**

Capgemini's CMDB Architects straddle the business and technical worlds: working with all your key stakeholders, we'll help create a Configuration Management Database that finds and manages every asset on your network, offers a trusted source of information for anyone who has a decision to make, and is flexible and lightweight enough to grow and evolve with your organisation.

## BUILT

**Before you can do anything, you have to know exactly what you're working with.** Using Tanium's single agent approach, Capgemini will ensure you have complete visibility across your entire IT landscape, quickly identifying and taking control of hardware and software assets across your organisation.

This information is then collated and organised around your agreed business needs, before bespoke policies and procedures are put in place to maintain reliable and secure insight to everyone who needs it.

## MAINTAIN

Whilst it can be exciting to get a new project up-and-running, sooner or later that enthusiasm will fade... so if your CMDB is going to continue to deliver real value, it needs to do so without placing onerous demands and unnecessary costs on anyone. You'll work with Capgemini to develop policies, procedures and automated processes that - without any significant increases in workload or network strain - keep up-to-date information at your fingertips.

## EMPOWER

The only thing worse than no information, is incomplete information. But complete data you can trust completely is a powerful tool to be used throughout your organisation - many of our clients are thrilled to find new and unexpected ways to leverage a truly reliable source of insight.

OPERATIONAL	BUSINESS
<ul style="list-style-type: none"><li>• Increase security &amp; manage vulnerabilities</li><li>• Optimise assets and overall ROI</li><li>• Improve reliability whilst reducing workload</li><li>• Maintain visibility of shifting landscape</li></ul>	<ul style="list-style-type: none"><li>• Prove regulatory compliance</li><li>• Support business agility</li><li>• Inform decision making</li><li>• Identify key investments and opportunities</li></ul>

# An end-to-end Visibility & Management Solution that keeps your business secure, agile, and efficient.



## Asset Optimisation

combines comprehensive real-time visibility with business intelligence to keep your IT landscape resilient, agile and efficient – ensuring the maximum possible return on every cent you invest in your network.



## CMDB Population & Support

leverages the wealth of data provided by the Tanium platform to deliver invaluable insight into your estate. Working with Capgemini, you'll design and implement a CMDB that supports your wider business objectives, drastically simplifying management and increasing efficiency whilst also providing an utterly reliable source of information to anyone who needs it.



## Patching Platform as a Service

takes all of the hassle out of the crucial patching process. Taking advantage of Tanium's end-to-end real-time visibility, Capgemini will manage every step: from scanning for patch applicability, assessing the risks, and ensuring patches are applied successfully, Patching Platform as a Service turns a never-ending security imperative into something you can manage with just a single click.



## Vulnerability Scanning

from Capgemini leverages the technical excellence of the Tanium platform to find, analyse and resolve the vulnerabilities at both application and OS level. A dedicated team identify vulnerabilities, analyse their impacts, and provide comprehensive mitigation recommendations to resolve any issues.



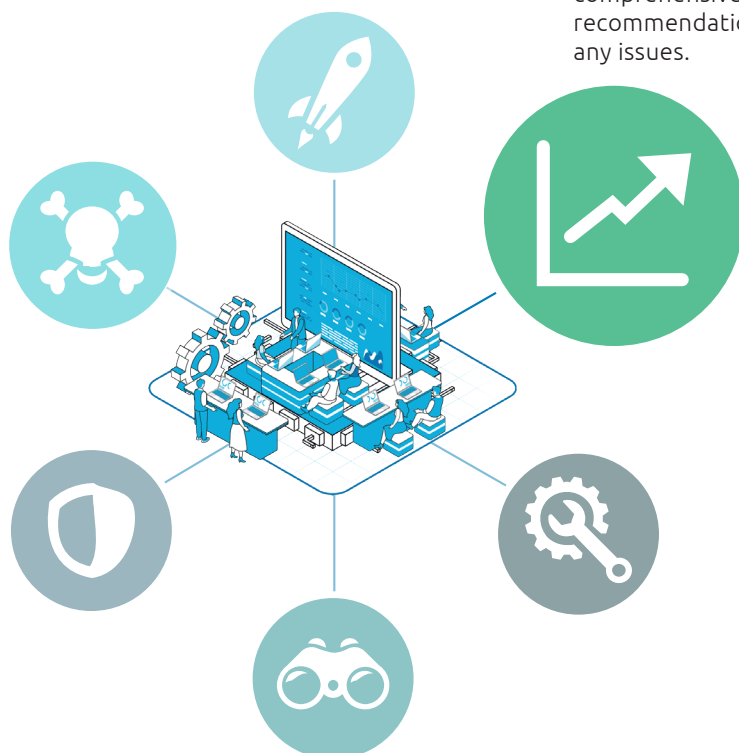
## Managed End-point

**Detection & Response** turns Tanium's Endpoint Detection system into Capgemini action. Constantly monitoring all endpoints for indicators of compromise, your Capgemini team are ready-and-waiting to identify, analyse and respond to every malicious action.



## Active Threat Hunting

offers the ultimate protection for your IT environment. Our ATH teams call on the latest research, our global network of Security Operations Centres, and a deep understanding of how malicious actors think, to constantly keep your business one step ahead. By hypothesising about possible threats, and using the Tanium platform to check your landscape for missed vulnerabilities or lurking intruders, Active Threat Hunting delivers pro-active network security.



## For more details, contact:

Capgemini Nederland B.V.  
Reykjavikplein1  
3543 KA Utrecht  
Postbus 2575 - 3500 GN Utrecht  
+31 (0)30 203 0500

Visit us at  
[www.capgemini.com](http://www.capgemini.com)